

CENTRAL CITY PUBLIC SCHOOLS

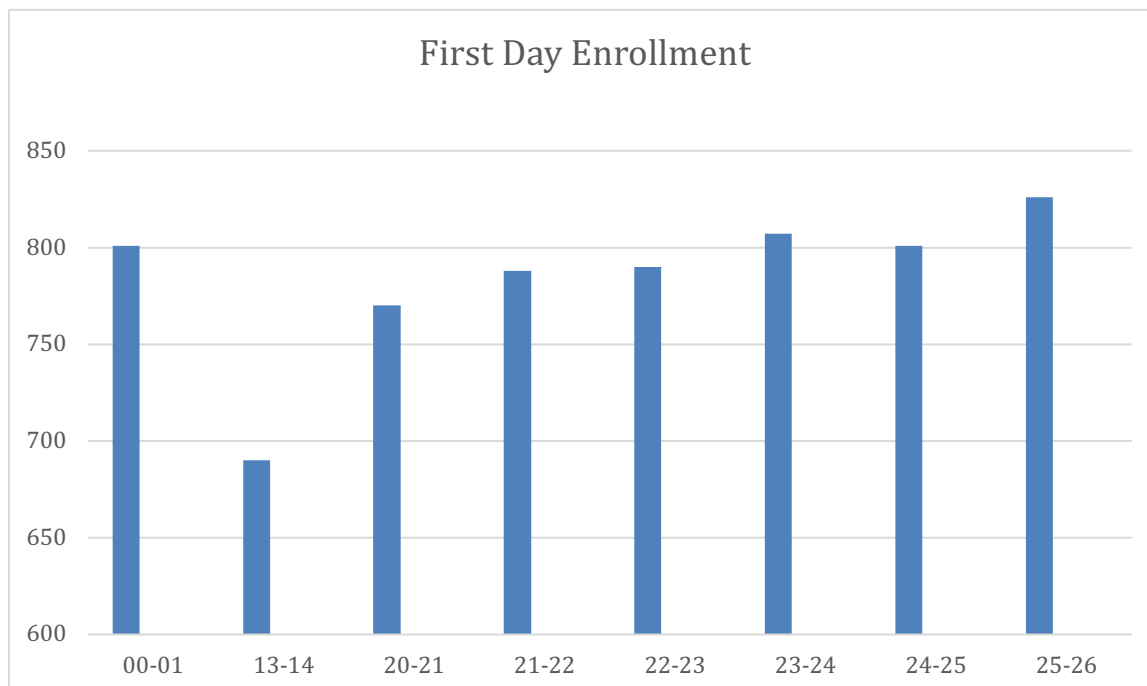


2025-2026 ANNUAL REPORT

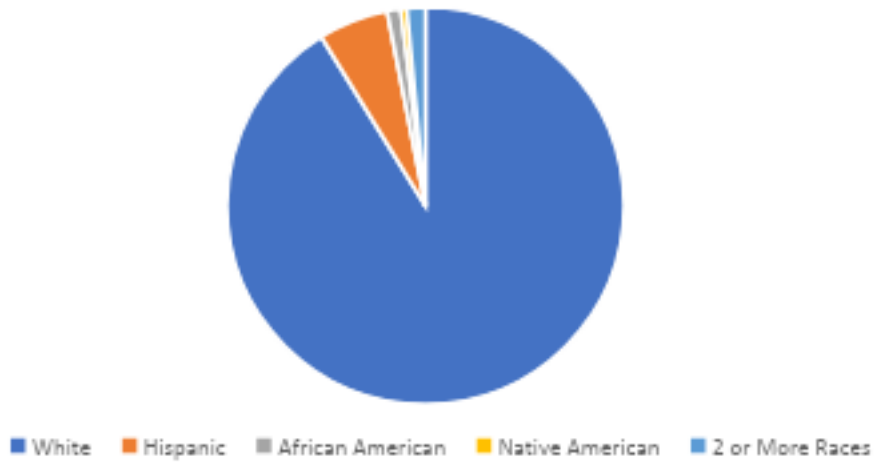
SCHOOL YEAR HIGHLIGHTS

- District Rated of Great with Excellent for Elementary
- Successful District School Improvement Visit
- Pre-ACT score well above State Average for Sophomores
- Met Goal For Every MAP Assessment Sub-Score (27 of 27)
- National Qualifiers in Business, FFA, DECA, Science, & SkillsUSA
- Softball Runner-Up, State Girls Basketball Qualifier, State Baseball Qualifier, State Wrestling Dual Runner-Up, Football Qualifier
- Individual Qualifiers in Cross Country, Wrestling, Track, & Golf
- Individual Medalists in Wrestling, Track, & Golf
- Individual Champions in Wrestling & Track

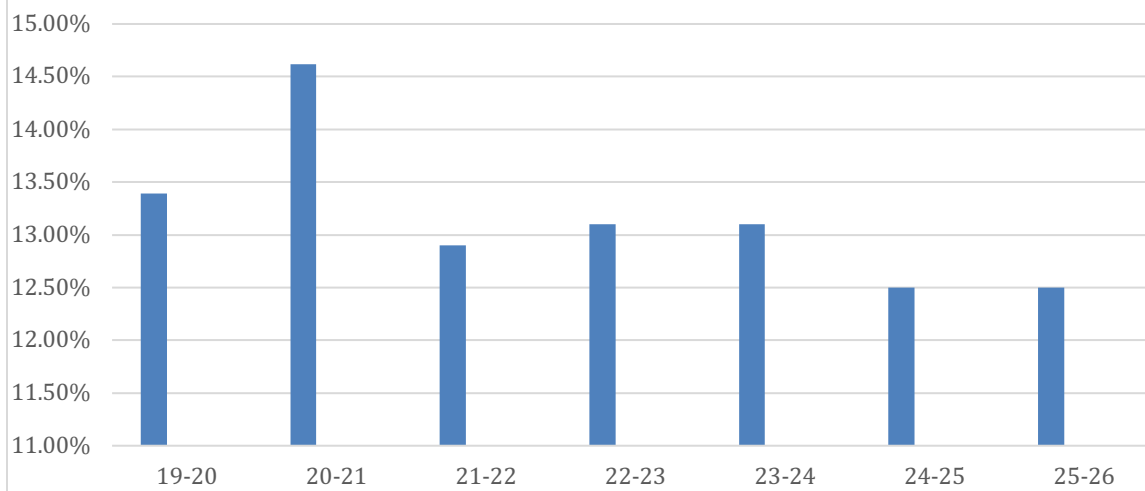
STUDENT DEMOGRAPHICS

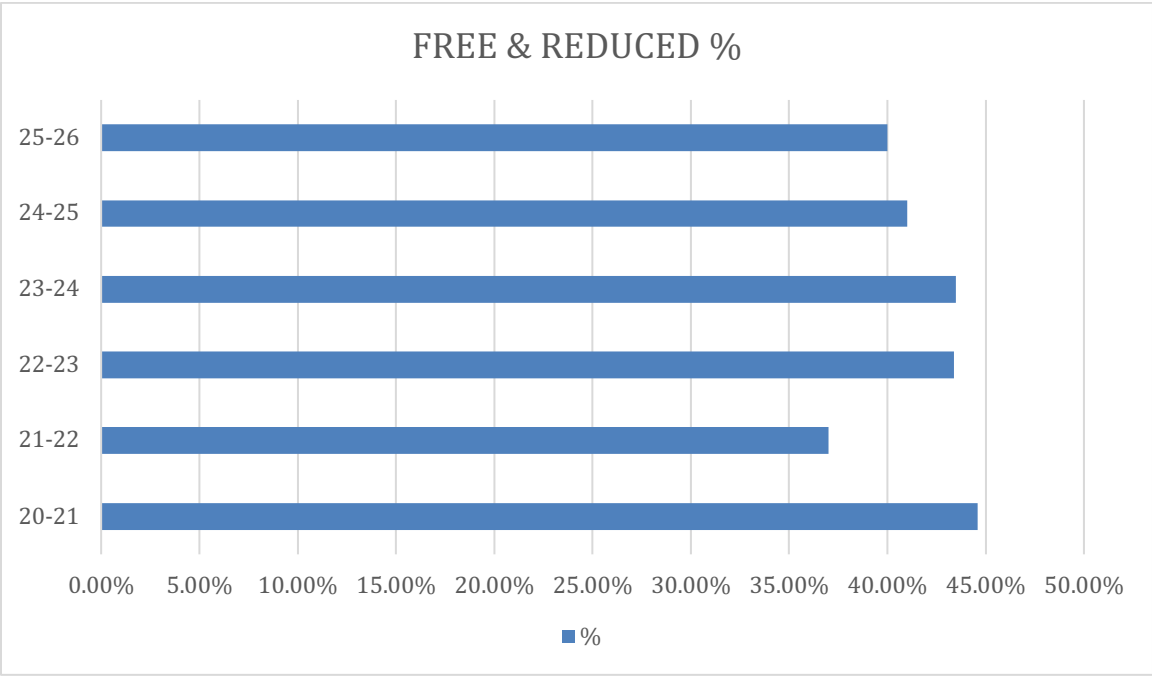
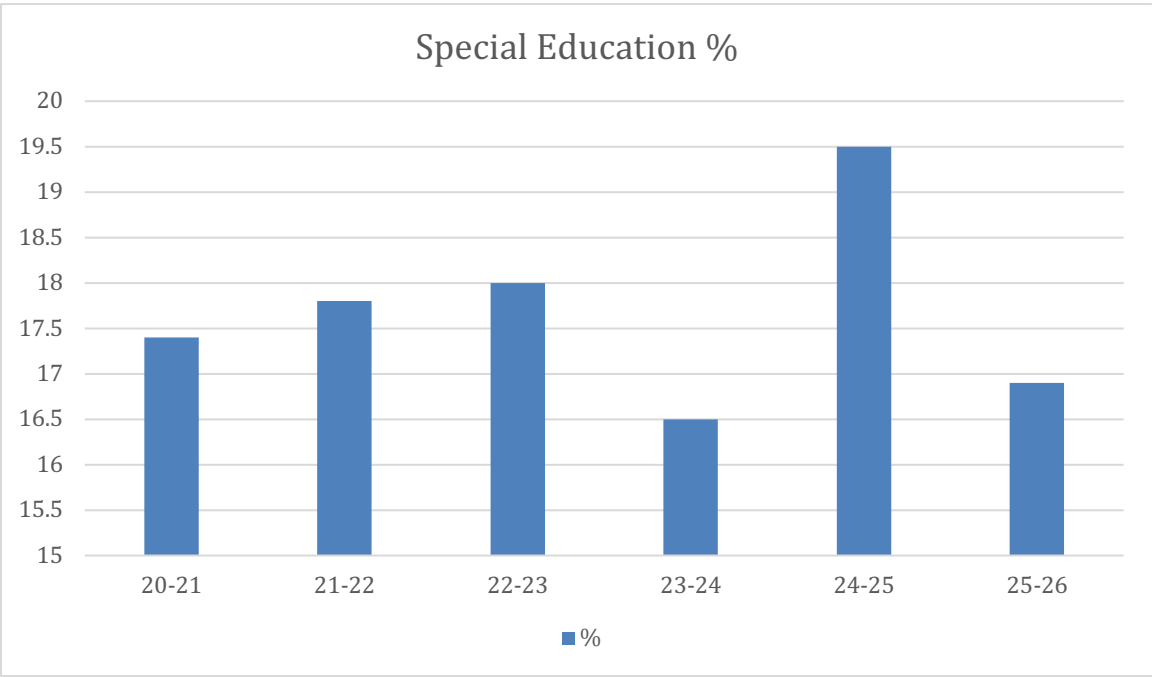


Student Background

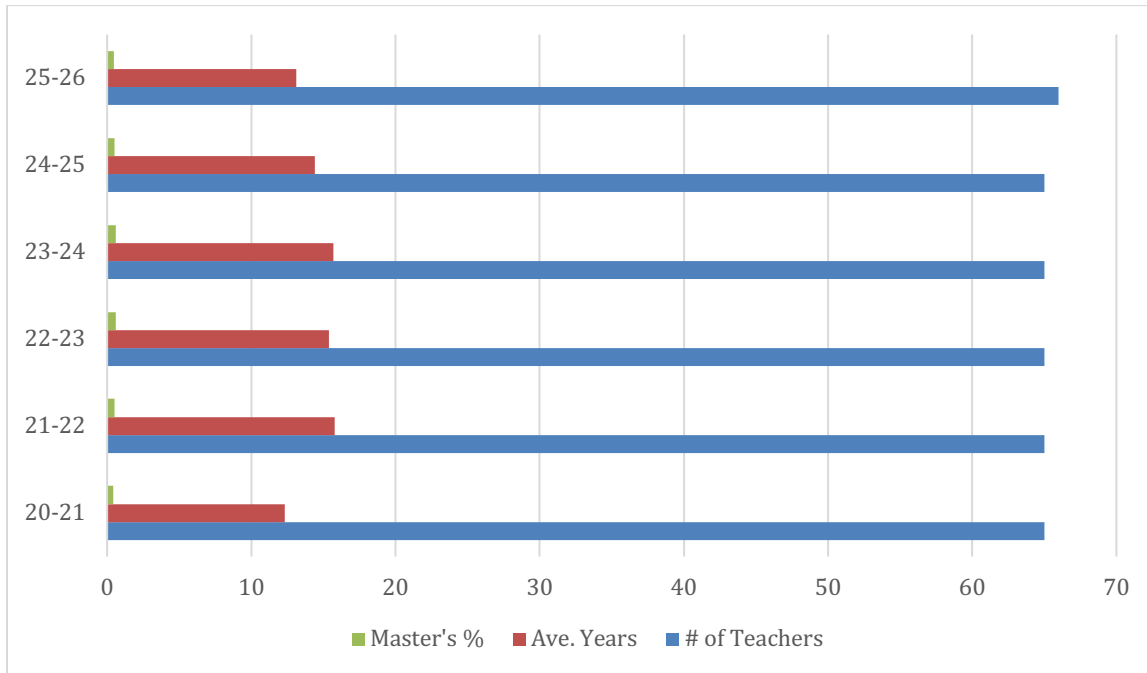


High Ability Students





STAFF INFORMATION



GRADUATION REQUIREMENTS

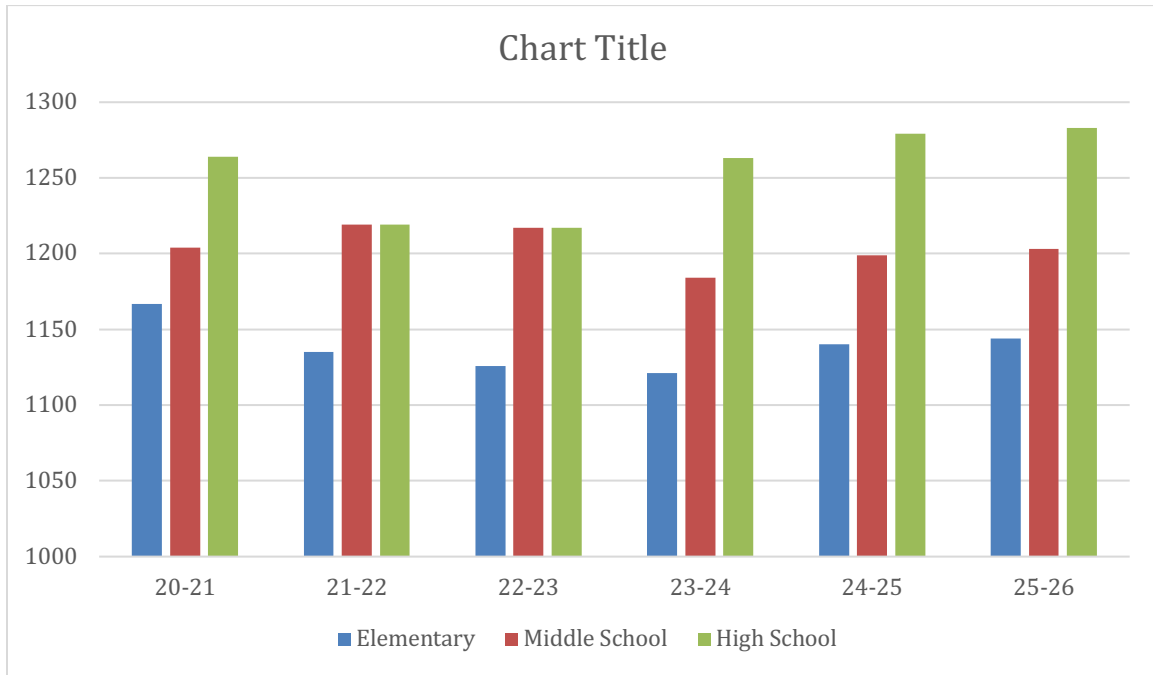
To participate in commencement exercises or receive a Central City Public Schools diploma a student must fully complete all requirements for graduation prior to the official commencement exercises, and complete other administrative requirements or conditions. The Principal may make allowances for students to participate in commencement exercises at his/her discretion.

To be eligible for graduation from Central City High School, a student must have earned a minimum of 230 semester hours credit in grades 9 through 12 inclusive. Credit hours will be computed in accordance with the Nebraska Department of Education

Satisfactory completion of the following courses must be presented in the candidate’s record:

English	40 credits	Art, Music, Comm	5 credits
Science	30 credits	Computers	10 credits
Social Studies	30 credits	Mathematics	30 credits
Physical Education	5 credits		
Health	5 credits		
Career and Tech Ed	20 credits		
Personal Finance (11 th grade)	5 credits		

INSTRUCTIONAL TIME



ACADEMIC

NWEA MAP SCORES

CUMULATIVE MAPS DATA

Reading	3rd	4th	5th	6th	7th	8th	9th	10th	11th	Total Score	Grand Total (27)
Fall 14	183.3	197	205.9	211.3	211.4	211	226.3	227.7	228.6	5.5	2014 (FA) 17.7
Fall 15	190.4	196.8	204.3	211.8	214.2	219.4	220.9	227.5	228.3	7.7	2015 (FA) 22.1
Fall 16	188.7	199.8	205.3	210.4	214.7	222.2	223.7	227.5	231.3	8.4	2016 (FA) 25.1
Fall 17	189.1	196.9	197.2	204	210.1	216.9	225.2	225.9	226	5	2017 (FA) 15.3
Fall 18	192.8	203.6	205.2	210.5	215.4	217.9	224.8	229.5	225.4	8.1	2018 (FA) 23.2
Fall 19	191.1	202.4	206.4	212.3	214	217.6	221.6	229.5	232.1	8	2019 (FA) 23.8
Fall 20	189.3	197.6	203	211.3	214.2	218.2	221.1	224.6	228.8	7.7	2020 (FA) 21
Fall 21	193.1	200.4	203.1	211	214.2	218.2	221.9	224.3	224.3	8	2021 (FA) 24.8
Fall 22	189.9	203.6	206.8	209.2	215.1	217.2	221.8	226.7	224.8	8	2022 (FA) 24.6
Fall 23	191.3	198.5	205.2	210.5	214.5	218.7	221.9	223.7	227.7	8.7	2023 (FA) 25.1
Fall 24	194.6	198.4	205.3	211.7	217.1	218	224	226.1	226	8.7	2024 (FA) 26
Fall 25	188.7	200.9	208	212.2	218.1	221.6	224.5	227.1	227.2	9	2025 (FA) 26.4
2025 National	184.7	195.9	203	209	212.3	215.7	216.2	217.8	218.2		
2020 National	186.6	196.7	204.4	210.2	214.2	218	218.9	221.5	223.5		
2015 National	188.3	198.2	205.7	211	214.4	217.2	220.2	220.4	222.6		
Winter 18	196.2	201.7	210.6	213.7	215.2	223.5	228.2	227.1	229.5	8.1	2018 (WR) 21.5
Winter 19	200.1	207.6	212.5	215.7	219.4	223.9	228.4	229.3	227.6	9	2019 (WR) 26.4
Winter 20	199.4	206.5	212.9	215.4	219.5	222.2	223.3	231.2	232.9	9	2020 (WR) 26.7
Winter 21	198.8	203.6	211.1	215.6	220.8	223.2	224.2	223.9	230.5	9	2021 (WR) 24.6
Winter 22	200.5	203.6	207.8	216.2	218	220.5	226.1	222.5	226.9	8	2022 (WR) 25
Winter 23	197.5	205.5	211.4	215.9	219.2	220.1	222.4	227.2	223.7	8.4	2023 (WR) 25.8
Winter 24	200.3	204.8	211.3	218.1	219.8	223.7	222.9	224.5	228.6	9	2024 (WR) 27
Winter 25	202.7	204.8	211.1	216.3	220.7	222.4	224.7	228.1	228.8	9	2025 (WR) 26.7
Winter 26	198.4	207.6	212.1	215.4	220.5	223.9	224.8	228.3	229.1	9	2026 (WR) 27
2025 National	191	201	206.4	210.7	213	216	216	217	216		
2020 National	193.9	202.5	209.1	213.8	217.1	220.5	222.9	224.6	224.6		
2015 National	195.6	203.6	209.8	214.2	216.9	219.1	221.3	221	222.7		

Language Usage	3rd	4th	5th	6th	7th	8th	9th	10th	11th	Total Score
Fall 14	182.3	196.2	205.8	211.4	211	215.9	224.9	227.2	228.4	5.9
Fall 15	188.4	195.8	203.9	211.4	213.1	218.4	222.1	226.1	229.5	6.7
Fall 16	186.1	198.1	205.6	208.8	214.4	220.2	219.9	225.1	228.7	8.3
Fall 17	188.9	197.2	197.3	205.1	210.5	216.1	226.2	224.9	228.7	5
Fall 18	194.1	202.2	205.8	208.4	213.9	217.1	224.8	229.1	227.8	8
Fall 19	192.5	202.8	207	211.5	213.5	218.5	222.9	227.5	233.8	8.7
Fall 20	193.1	199.5	202.3	209.8	212.9	220	223.8	223.4	228.6	7.7
Fall 21	195.2	201.6	205.3	211.9	214.6	217.7	223.4	222.8	225.1	8.7
Fall 22	191.6	204.8	207.3	210.3	215.5	218.5	220.8	227.7	225.9	9
Fall 23	192.6	198.9	209.3	213.1	216.2	221.4	222.2	224.8	231.2	9
Fall 24	196	201	206.8	215.2	217	218.8	224.3	226.9	227.3	9
Fall 25	189.2	203.5	209.1	211.8	217.5	221.8	224.8	227	229.9	8.7
2025 National	184.4	194.7	201.9	206.5	210.1	213.7	213.9	215.9	217.6	
2020 National	187.7	197.3	204.1	209.4	212.7	215.5	216.7	218.8	220.7	
2015 National	189.4	198.8	205.6	210.7	214	216.2	218.4	218.9	221.5	
Winter 18	198.1	203.5	208.7	212.2	216.4	223.7	226.5	226.6	228.4	6.4
Winter 19	202.2	209.3	212.7	215.7	220.7	224.5	227.2	231	229.5	9
Winter 20	202	207.9	214.4	214.8	220	223.6	225.2	231.5	233.9	9
Winter 21	201.2	206.1	210.7	214.5	217.9	225	224.5	225.9	230.6	9
Winter 22	204.5	206.5	208.4	216.2	219.4	221.9	224.5	224.4	228.9	9
Winter 23	199.5	209.2	212.3	215.4	220.1	222.5	222.9	231.3	227.4	9
Winter 24	202	207.7	213.2	218.6	221.6	226.1	225.3	225.6	233.9	9
Winter 25	204.1	207.7	211.5	218.4	220.6	225.5	226.2	228.8	229	9
Winter 26	197.8	210.5	213.6	217.3	223.2	227.7	224.7	231.1	230.6	9
2025 National	193	200	204.8	208.6	212	215	216	217	218	
2020 National	195.1	202.9	208.5	212.8	215.3	217.7	218.2	220.2	221.9	
2015 National	196.8	204.4	209.7	213.9	216.5	218.1	219.7	219.7	222.1	

Math	3rd	4th	5th	6th	7th	8th	9th	10th	11th	Total Score
Fall 14	186.8	202	209.4	216.8	220	224.7	231.4	236.6	241.5	6.3
Fall 15	191.7	201.7	209.2	218.8	220	228	231.7	233.9	240.5	7.7
Fall 16	188.5	203.3	212.7	217.5	224.6	230.2	233.6	235.8	239.1	8.4
Fall 17	189.8	200.1	200.2	210.9	217.6	223.8	237.8	237.5	242.4	5.3
Fall 18**	188.7	203.8	208	215.8	220.7	226.1	236.5	242.3	241.1	7.1
Fall 19	190.3	201.9	213	216.8	221.3	229.2	233.6	241.9	246.4	7.1
Fall 20	187.2	198.8	205.7	214.3	221	228.9	233.4	234	242.8	5.6
Fall 21	191.8	202.3	209.1	216.4	220.5	228	236.1	233.9	238.2	8.1
Fall 22	187.1	203.1	212.9	213.2	223.1	228.1	233	240.7	239.4	7.6
Fall 23***	189	198.1	209.5	219	221.2	229.2	231.7	234.5	241.5	7.4
Fall 24	192	200.4	207.7	218.9	226.7	230.6	237	238.4	239.4	8.3
Fall 25	186.3	203.2	210.6	216.8	224.5	238.3	239.6	243.2	244.8	7.7
2025 National	184	197	206	210.2	217.2	222	224.9	226.8	229.2	
2020 National	188.5	199.6	209.1	214.8	220.2	224.9	226.4	229.1	231.7	
2015 National	190.4	201.9	211.4	217.6	222.6	226.3	230.3	230.1	233.2	
Winter 18	197.5	204.3	214.4	220.7	227.5	234.2	240	239.5	244.6	7
Winter 19	198.5	210.9	216.4	220.6	230.2	233.7	239.3	243.3	242.7	8.4
Winter 20	199.7	208.2	217.2	222.7	232.1	233.3	236.5	244.8	249	8.7
Winter 21	197.8	205	213.8	219	228.1	234.6	235.8	236.2	243.6	6.6
Winter 22	199.5	206.7	214.4	223.8	227.5	231.4	239.2	235	241.4	8
Winter 23	196.8	208.4	218.7	221.2	229.2	231.8	234.6	243.2	239.5	8.4
Winter 24	200.4	209.3	217.3	227.3	229.4	234.9	236.7	238.3	244.5	9
Winter 25	202.5	211.1	214.9	226.6	233.4	235.4	238.8	241.9	241.9	8.7
Winter 26	200.7	219.6	223.6	227	235.3	242.4	241.5	246.4	248.8	9
2025 National	192	203	211.8	216	220	224	226	227	229	
2020 National	196.2	206	214.7	219.6	224	228.1	228.7	231.2	233.5	
2015 National	198.2	208.7	217.2	222.1	226.1	229.1	232.2	231.5	234.4	

** = After one complete year of MyMath (Saxon prior).
 *** = Reveal Math
 Green = Met ALL norms
 Orange = Met 2 norms = .7
 Black = Met 1 norm = .3
 Red = BAD
 Pink Background = Record Performance

PRE-ACT, ACT, NSCAS

	<u>2020-2021</u>	<u>2021-2022</u>	<u>2022-2023</u>	<u>2023-2024</u>	<u>2024-2025</u>	<u>2025-2026</u>	<u>State Ave</u>
PRE-ACT	18	16.5	18.8	19.1	18.9	19.22	17.7
ACT	19.6	19.4	18.2	21.2	19.2	18.71	20.1

ACTIVITIES REPORT

Over 98% of Central City Public School High School students participate in at least one activity.

Sports

- B/G Cross Country
- Volleyball
- Football
- Softball
- B/G Basketball
- B/G Wrestling
- B/G Track
- Baseball
- B/G Golf
- Dance
- Cheer

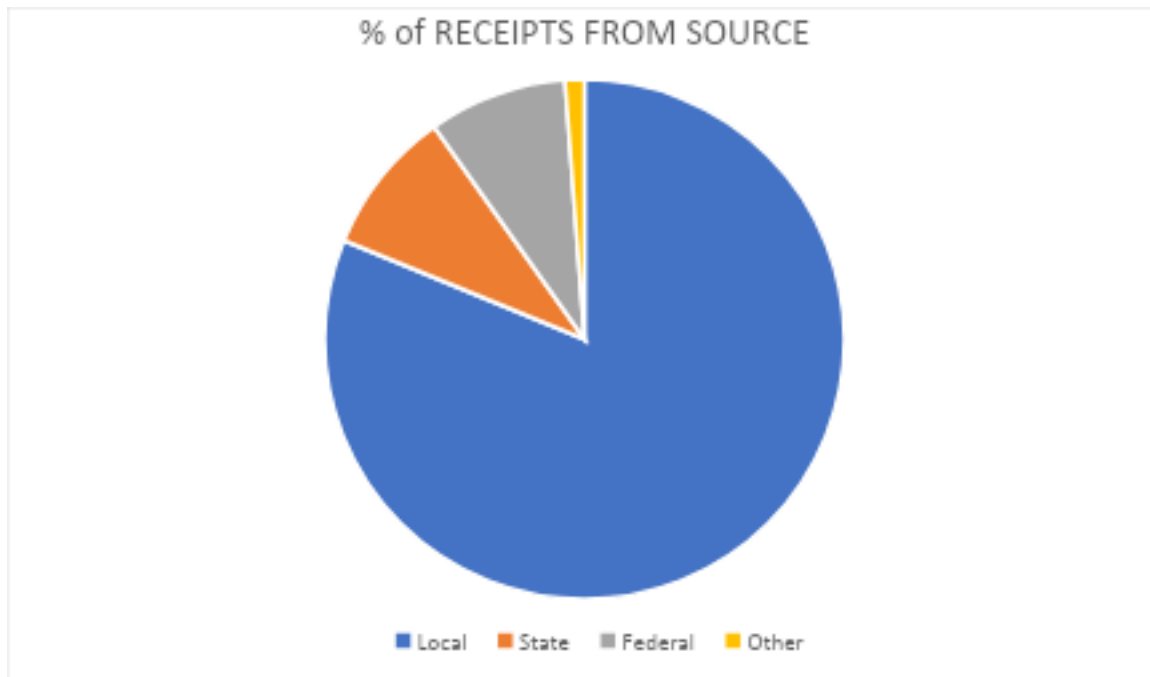
Activities

- Band
- Pep Band
- Jazz Band
- Choir
- Show Choir
- Musical
- One Act
- Speech
- FFA
- DECA
- Skills USA
- National Honor Society
- Leadership/Student Council
- Quiz Bowl
- Science Research Club
- Yearbook
- Fishing Club

FINANCIAL REPORT

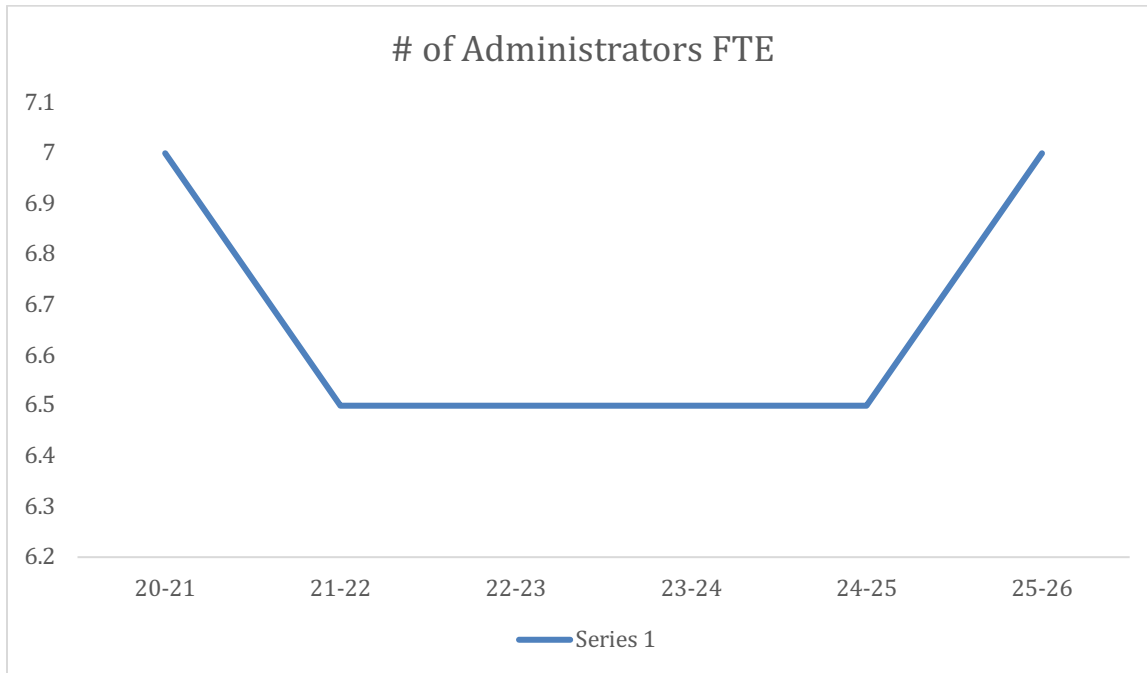
	<u>20-21</u>	<u>21-22</u>	<u>22-23</u>	<u>23-24</u>	<u>24-25</u>	<u>25-26</u>
Tax Asking	\$9,705,000	\$9,940,000	\$10,270,000	\$9,880,000	\$10,130,000	\$10,388,000
Total Levy	\$1.0058	\$1.0057	\$0.9723	\$0.8575	\$0.78719	\$0.7281
Expenditures	\$11,599,914	\$11,772,130	\$12,141,739	\$12,721,298	\$13,132,507	****
Per Pupil Cost	\$18,173	\$18,635	\$19,361	\$19,733	\$19,726	****

*Total Tax Asking Increase from 2016-2017 = 6% (0.8% per year average)



ADMINISTRATION

- Jeff Jensen – Superintendent/5-6 Principal*
- Holee Hanke – 7-12 Principal*
- Justin Anderson – 7-12 Assistant Principal/Activities Director*
- Zach Springer – 7-12 Dean of Students*
- Andrew Stolpe – Opportunities Director*
- Neely Moser – Elementary Principal*
- Maureen McElhinny – Special Education Director*
- Brandon Detlefsen – Technology Director*



BOARD OF EDUCATION

- Lisa Wagner – President*
- Dr. Brian Buhlke – Vice President*
- Aaron Heins – Secretary*
- Charles Homolka*
- Brent Kennedy*
- Brett Zikmund*

ANNUAL NOTICES

NOTICE OF NON-DISCRIMINATION - The school district shall not discriminate on the basis of race, national origin, creed, age, marital status, sex, disability, religion, veteran status, pregnancy, childbirth or related medical condition, or other protected status in its educational programs, activities or employment policies in compliance with Title VI and VIII of the Civil Rights Act, Title IX (Policy 3057), the Rehabilitation Act, the Nebraska Equal Educational Opportunity Act, the Americans with Disabilities Act, and all other relevant civil rights statutes and regulations.

Any person who believes she or he has been discriminated against, denied a benefit, or excluded from participation in any district education program or activity may file a grievance using the district’s grievance procedures.

Inquiries regarding compliance with Title IX, the Nebraska Equal Opportunity in Education Act, Section 504, or Title VII may be directed to the superintendent.

DESIGNATION OF COORDINATORS - Any person having concerns or needing information about the District’s compliance with anti-discrimination laws or policies should contact the District’s designated Coordinator for the applicable anti-discrimination law.

Law, Policy or Program	Issue or Concern	Superintendent
Title VI	Discrimination or harassment based on race, color, or national origin; harassment	Superintendent
Title IX	Discrimination or harassment based on sex; gender equity	Activities Director
Section 504 of the Rehabilitation Act and the Americans with Disability Act (ADA)	Discrimination, harassment or reasonable accommodations of persons with disabilities	Superintendent
Homeless student laws	Children who are homeless	Superintendent
Safe and Drug Free Schools and Communities	Safe and drug free schools	High School Principal
Behavioral Awareness Point of Contact	Behavior Intervention	School Psychologist

The Coordinator may be contacted at: (308-946-3055) 1510 28th Street, Central City, NE 68826

TEACHER QUALIFICATION NOTICE - The No Child Left Behind Act gives parents/guardians the right to get information about the professional qualifications of their child’s classroom teachers. Upon request, the District will give parents/guardians the following information about their child’s classroom teacher:

1. Whether the teacher has met State qualifications and licensing criteria for the grade levels and subject areas in which the teacher provides instruction.
2. Whether the teacher is teaching under an emergency or provisional teaching certificate.
3. The baccalaureate degree major of the teacher. You may also get information about other graduate certification or degrees held by the teacher, and the field of discipline of the certification or degree. We will also, upon request, tell parents/guardians whether their child is being provided services by a paraprofessional and, if so, the qualifications of the paraprofessional. The request for information should be made to an administrator in your child's school building. The information will be provided to you in a timely manner. Finally, the District will give timely notice to you if your child has been assigned, or has been taught for four or more consecutive weeks by a teacher who does not meet the requirements of the Act.

SPECIAL EDUCATION CHILD FIND - The Central City Public Schools asks you to assist us in our "Nebraska Child Find" efforts. This is an ongoing statewide search for all unserved children with disabilities, ages birth through 21.

If you know of a child who is experiencing difficulties with motor development, speech and language, vision, hearing or learning, please refer the parent to the number below. The Central City Public Schools District will provide an educational evaluation at no cost to the parent. If the child qualifies under Nebraska law, a free and appropriate educational program will be developed to meet his/her educational needs.

To contact us, please call SPED Director at 308-946-3057. You may also contact Nebraska Child find at (888) 806-6287.